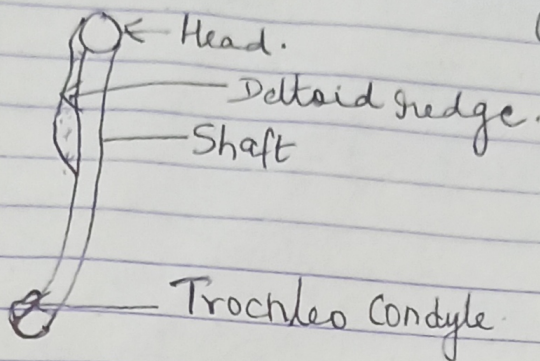
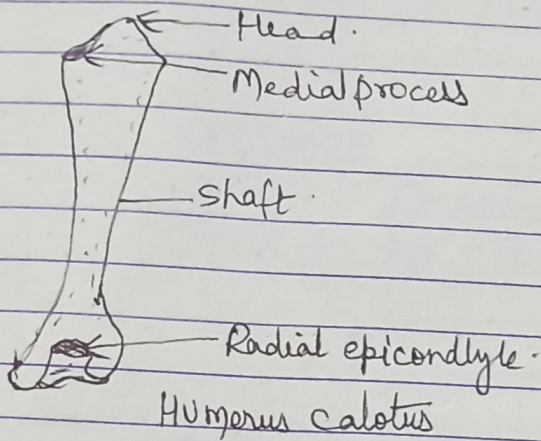


Bones - Limbs.

HUMERUS. Bufo Forelimb bone.



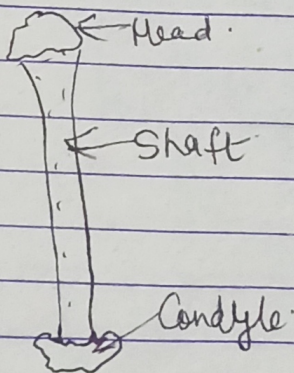
- ① A round head present at the proximal end.
- ② Shaft rod like and slightly curved.
- ③ Distal end bears a pulley like trochlea.
- ④ A deltoid ridge extends from head to the middle of the shaft.



Calotes sp (Garden lizard)

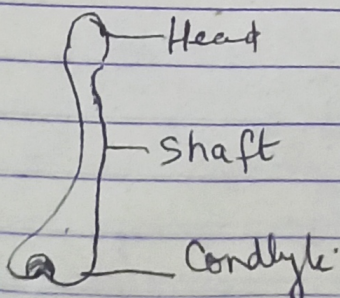
- ① strong, stout elongated bone, slightly narrow at the middle.
- ② The distal end bicondylar
- ③ Deltoid ridge absent
- ④ The swelling of the proximal end is the head.

Femur - Bufo Hind limb bone



- ① A long, narrow, round curved bone.
- ② Proximal end bears a round head.
- ③ Distal end slightly flattened and forms a condyle.

Femur, Calotes (Garden lizard) Varanus sp.



1. A strong, stout, slightly curved elongated bone.
2. Epiphysis present at both the ends
3. Proximal end bears a round head.
4. A rough surfaced trochanter present near the head.